

New Zealand Association of Family Therapy, Incorporated

Code of Conduct

This code is intended as an aspirational standard of conduct for our membership, until such time that a formalised code would be adopted in relation to achieving legal accreditation of members.

Because the code of the association is only a guide, the conduct of its members is not regulated under the authority of NZAFT, and issues of propriety or legality of conduct should be referred to other professional bodies with whom the member is affiliated.

Purpose of Association:

The New Zealand Association of Family Therapy is dedicated to the support, networking, and improvement of practice of everyone working with families and/or systems. The term therapy in the association name is meant in its broadest meaning of “acting in the service of healing” rather than being limited to a provision of professional treatment. Members of the NZAFT will aspire to:

- Acknowledge the many components of healing (personal, familial, community, systemic), the relation they have to each other, and the necessity of addressing issues from multiple directions.
- Appreciate and accept diverse perspectives and voices.
- Promote a systemic approach in their practice.
- Maintain high standards and integrity in their work and interactions with others.
- Ensure that their practice is appropriate in regard to boundaries and privacy issues.
- Continually seek to improve their knowledge, wisdom, and practice, while understanding the scientific evidence for their choices.
- Act with humility, care, and empathy in relation to all members of the system while keeping to the highest standards of ethical and legal practice.

New Zealand Association of Family Therapy Organisational Structure

Membership Criteria

1. General Membership. Membership in the NZAFT is open to everyone interested in family therapy, systemic practice, or family support. Members will receive the electronic association newsletters, be eligible for posting on the therapist locator page of the website, and receive member discounts to events. Future NZAFT members can join the Association by completing the membership form. Members can withdraw at any time by notifying the association in writing. The Association can terminate any member who is not acting in accordance with the principles of the association by notifying the member of this decision in writing.
2. Clinical Practitioner Membership. Members may apply for membership as a Clinical Practitioner. There are two specialist sub-categories—Family Therapy and Family Work.
 - a. Family Therapy Criteria. To qualify for this status, the member must have completed:
 - i. 30 hours of Family Therapy Training. These 30 hours must have been in a course or programme *specifically* teaching family therapy, not from workshops which covered a family therapy system or technique.
 - ii. An additional 20 hours of training in workshops related to family therapy systems or techniques.
 - iii. A minimum of 6 months practice in Family Therapy.
 - iv. An application fee of \$25 will be required to cover administrative costs of reviewing the application documentation.
 - v. Clinical Practitioner-Family Therapy Members will receive a certificate designating their having met the NZAFT criteria for the category.
 - b. Family Work Criteria. To qualify for this status, the member must have completed:
 - i. 30 hours of training in courses covering working with systems, facilitating family/whanau groups, or couples/ family counselling.
 - ii. An additional 20 hours of training in workshops related to working with families or systems.
 - iii. A minimum of 6 months practice in working with families or systems.
 - iv. An application fee of \$25 will be required to cover administrative costs of reviewing the application documentation.
 - v. Clinical Practitioner-Family Work Members will receive a certificate designating their having met the NZAFT criteria for the category.
3. Approved Supervisors Criteria. To qualify for this status, the member must:
 - i. Be an NZAFT Clinical Practitioner.
 - ii. Have received training in supervision practice.
 - iii. Have at least 6 months experience in providing supervision to at least 3 supervisees.

- iv. An application fee of \$25 will be required to cover administrative costs of reviewing the application documentation.
- v. Supervision offered by Approved Supervisors will receive the NZAFT “tick” of approval, and the supervisor will be listed on the website as an Approved Supervisor.

In an effort to ensure that training receiving NZAFT approval is of high quality, the following standards must be met:

4. Approved Family Therapy Trainer Criteria.

- i. Trainers must have successfully completed 250 hours of training, 175 of which should have been within a 2 year training program in family therapy that has been approved by NZAFT.
- ii. Trainers must have had at least 1000 hours of family therapy practice as the primary therapist.
- iii. Trainers must have distinguished themselves in the field of family therapy either by writing books/articles, providing workshops, or serving on boards.
- iv. An application fee of \$50 will be required to cover administrative costs of reviewing the application documentation.
- v. Training offered by Approved Family Therapy Trainers will receive the NZAFT “tick” of approval, and the trainer will be listed on the website as an Approved Family Therapy Trainer.

5. Approved Family Work Trainer Criteria.

- i. Trainers must have successfully completed 250 hours of training, 175 of which should have been within a 2 year training program in systems, family/whanau practice, couples/group therapy, or affiliated programmes.
- ii. Trainers must have had at least 1000 hours of practice as an involving families practitioner.
- iii. Trainers must have distinguished themselves in their field either by writing books/articles, providing workshops, or serving on boards.
- iv. A fee of \$50 will be required to cover administrative costs of reviewing the application documentation.
- v. Training offered by Approved Family Practitioner Trainers will receive the NZAFT “tick” of approval, and the trainer will be listed on the website as an Approved Family Practitioner Trainer.

All fees paid to the NZAFT general fund will be used to offset administrative costs and association expenses. Profits made by local and regional bodies will be used at the discretion of the group that ran the event after appropriate national coordination expenses, if any, are deducted. Profits from national events such as NZAFT conferences will be administered by the national steering committee.

Rules of the New Zealand Association of Family Therapy:

1. Individuals join the association by completing the membership application form at <https://www.elbowspace.com/servlets/cfd?xr4=&formts=2012-03-22%2016:28:35.477665> or by sending that information by email to nzaft@xtra.co.nz
2. Members may drop out of the association at any time by emailing nzaft@xtra.co.nz and stating they wish to be removed from the list.
3. Rules of the association may be altered, added to, or rescinded by a majority vote of the Executive Steering Committee following a poll of the members.
4. Communication within the association is primarily electronic. Members would receive summons to attend general meetings of the society. Members who cannot attend would be able to vote electronically.
5. The rules of the society prohibit election of officers—instead there is election of a steering committee, with two members being elected from each of the regional chapters as described in the main document. The Executive Committee can authorise members to serve specific functions such as keeping minutes, creating correspondence, or liaison with members.
6. The common seal of the society will be held by the Communications Support Coordinator who will make it available as required.
7. Allocation of the funds of the society will be determined by a majority vote of the Steering Committee following a poll of the members. The Communications Support Coordinator will dispense funds as authorised by the committee.
8. If the society is placed into liquidation, the funds and assets of the society will be placed into a trust account; trustees will be authorised to spend funds on projects that related to family therapy in New Zealand.

Administration of the New Zealand Association of Family Therapy

Because NZAFT is committed to maintaining as flat a hierarchy as possible and dedicated to ensuring the maximum input from all members, the following structure is proposed:

1. Decisions on all levels of the NZAFT will only be made by surveying the membership. This will be achieved by email communication, electronic polls/surveys/questionnaires, and meetings. This applies to conditions of membership, distribution of funds, and altering the rules of the association.

2. Members are encouraged to form local branches which can serve as a social, professional, and support network. Local branches will determine their own function, activities, and formats of interaction.
3. Ten regional representatives will be selected to participate in a National Steering Committee. The regions can be broken up into the following districts:
 - a. Northern: Northland and Auckland regions
 - b. Central North Island: Waikato, Lakes, Rotorua, Hawkes Bay, Taranaki, East Cape
 - c. Lower North Island: Wellington, Manawatu, Wairarapa, Wanganui
 - d. Upper South Island: Canterbury, Nelson/Marlborough, West Coast
 - e. Lower South Island: Otago, Southland

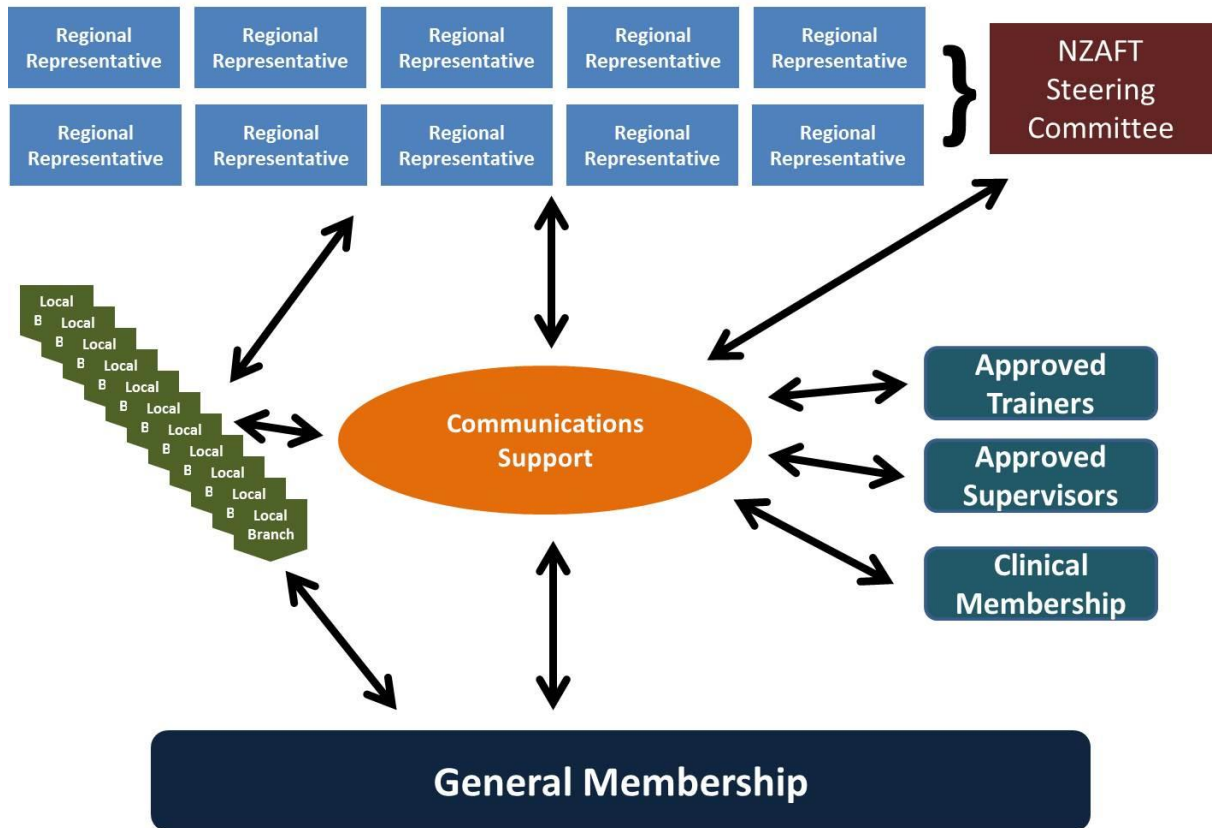
Each district would contribute two members to the National Steering Committee to discuss issues that transcend local or regional boundaries, such as national conference planning or association structure/benefits. The National Steering Committee will appoint a member to be responsible for the common seal, one to keep minutes and records, and one to be responsible for the distribution/collection of funds. The Association is not empowered to borrow funds. If the association is dissolved, all funds and property will be held in trust for the purpose of promoting family therapy in New Zealand. Trustees will be appointed by the Steering Committee.

4. Communication at all levels will be facilitated, organised, and collated by a Communications Support Facilitator who would send out questionnaires, collate results, and pass them along to relevant groups. The Communications Support Facilitator could also be responsible for collection and development of the NZAFT newsletter and website.

Additional Committees or Sub-Associations dedicated to specific issues can also be formed, such as:

1. Clinical Accreditation Committee: Individuals who want to pursue getting Family Therapy recognised and accredited under the Health Practitioners Competence Assurance Act.
2. Special Interest Groups: Like-minded practitioners (i.e., Family Advisors, Mental Health Practitioners, Family Members, Consumers Dedicated to Systemic Practice, Cultural Groups, Structural Family Therapists, Eating Disorder Clinicians, etcetera) can liaise to provide support or share new techniques /ideas.

A brief diagram of the proposed flow of responsibility and information follows:



NZAFT Membership Fee Structure:

General Membership:	No fee
Clinical Membership:	Additional \$25
Approved Supervisor:	Additional \$25
Approved Trainer:	Additional \$50

Additional Options:

IFTA (International Family Therapy Association)

If 25 or more NZAFT members choose to join IFTA (International Family Therapy Association), they can form a New Zealand Division of that body, accruing all the rights and benefits of international membership in IFTA while keeping their NZ identity.

Members must join IFTA directly, <https://www.ifta-familytherapy.com/application/> . Currently, fees are US\$80 to join (student discounts available).

As a member of IFTA you will receive a subscription to the Journal of Family Psychotherapy. This is the official journal of IFTA and is sent to you as part of your membership fee and is available online as well. The online International Connection newsletter provides you with updates about the organization and additional articles written by members worldwide. A new Members Only Research E-News Forum is sent quarterly highlighting research in marriage and family therapy.

A special World Congress discounted registration fee is available every year for members attending the annual World Family Therapy Congress, and an IFTA Member Directory is available to members only. The Training Division, a special sub-section of IFTA, is available to members who are interested in training others in marriage and family therapy. By joining the Traveling Trainers program, members can become part of the worldwide network of trainers.

Australia New Zealand Journal of Family Therapy

NZAFT Members can order the ANZJFT Journal directly at <http://www.anzjft.com/pages/subscriptions.php> .

Prices for 2012 personal subscriptions are:
Online (2012 special NZ deal): A\$66
Hardcopy: A\$109.50

Institutional (group) prices can also be seen at <https://www.australianacademicpress.com.au/journals/details/10/ANZJFT>